

just A FACE in the crowd?

Hardly! You'll be surprised at what people can tell about you before you even open your mouth.

Shape up

Face reader Zorica Jovan (readingfacevalue.com) told us, "Different face shapes, combined with facial features, tell a story about us", so we grilled her to get the deets on what they all indicate...

» **SQUARE** People with square faces are doers who are practical, solid and grounded. Zorica says, "They may be quick to fire up, but they will cool off just as quickly". Squares are full of energy and love being around their family.

» **RECTANGULAR** People with rectangular faces set high standards and have the strength and determination to succeed. These people are also quite giving of their time and energy – especially to help those who are less privileged than they are.

» **OVAL** "An oval face points to an idealistic, affectionate person who cares for others," says Zorica. Ovals set high standards for themselves and are also quite creative.

» **ROUND** Those with round faces are easygoing, affectionate, friendly, happy and very sensitive. They also have a craving for security and stability.

» **INVERTED TRIANGLE** "Those who fall into this category are open-minded, but very sensitive and emotional, and can be easily upset when misunderstood," says Zorica. They love talking and meeting people, but tend to be choosy with who they open up to.

» **TRIANGULAR** Zorica says those with a triangular face have good ambition in life, but may lack the patience needed to achieve their goals. Sometimes they feel the need to be in control, and may be close-minded.

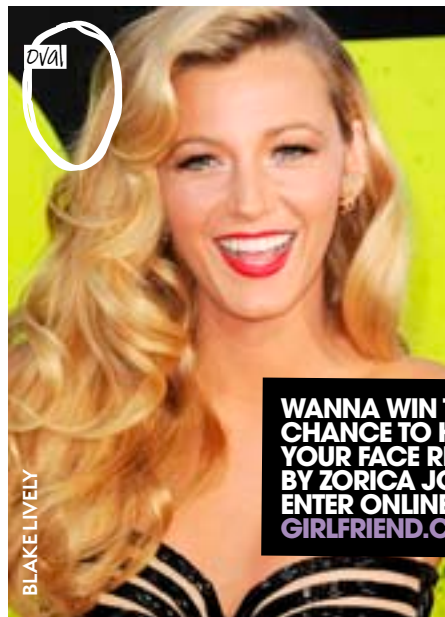
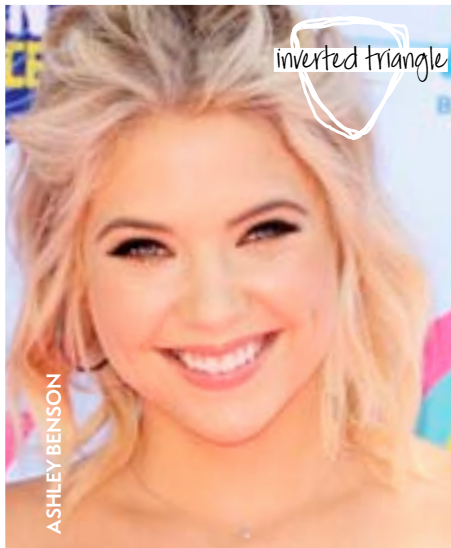
It's all in the detail

They say the eyes are the windows to the soul, and that the nose knows, so here's a rundown on two key features that offer clues to your personality...

» **EYES** Eyes that are wide apart suggest that the person is laidback and can be easily distracted.

Close-set eyes means the holder can stay focused for a long time, but could be narrow-minded, suspicious and critical. Private, deep thinkers have a pair of deep-set eyes, while those with protruding eyes are eager to participate in group activities and often crave the desire to feel appreciated.

» **NOSE** "A long-nosed person can be a logical planner who takes a while to think things through before making a decision," says Zorica. A broad nose represents stability, super-concentration and success, while those with a large nose work well independently and are determined to make a difference in the world. On the other end of the scale, a small nose signifies someone who enjoys being spontaneous, but can often feel vulnerable when put in a leadership position. An arched nose identifies someone as being creative yet practical, and a nose that has very visible nostrils is known as a snub nose – it's linked to happy-go-lucky people who may be frivolous with their cashola.



WANNA WIN THE CHANCE TO HAVE YOUR FACE READ BY ZORICA JOVAN? ENTER ONLINE AT GIRLFRIEND.COM.AU!